

## Specification sheet LX2183

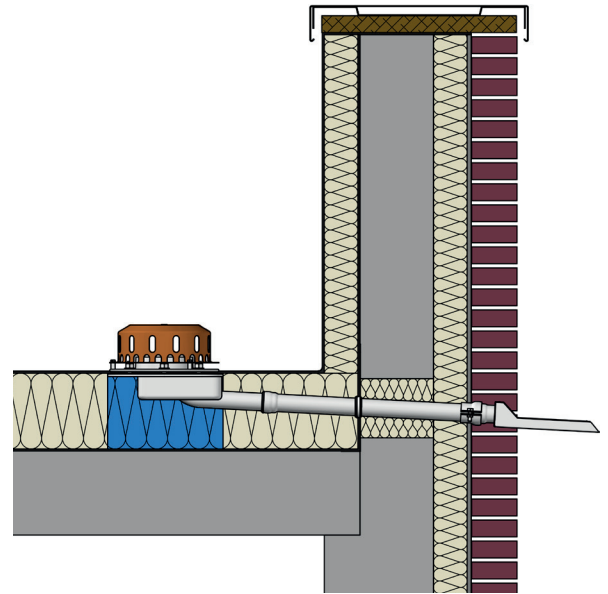
### Parapet drainage RAINSTAR® as rectangular spout

**Emergency drainage**

**Gravity flow**

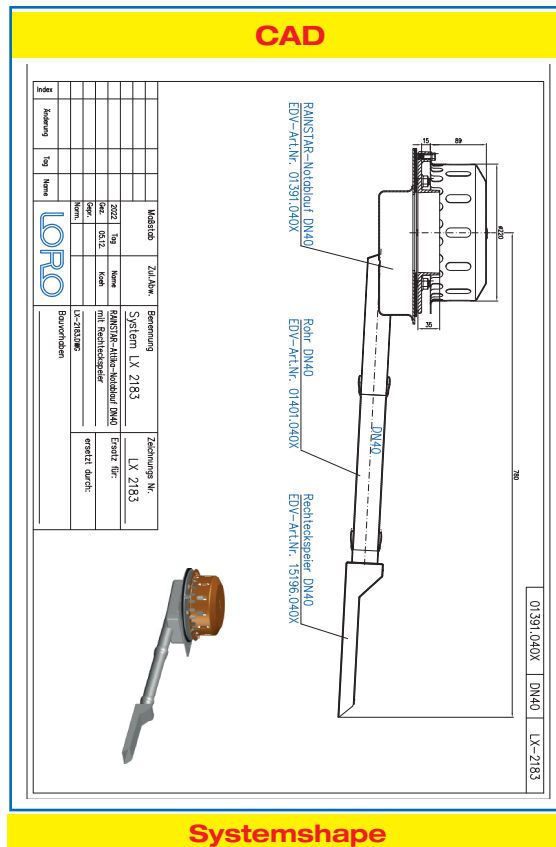
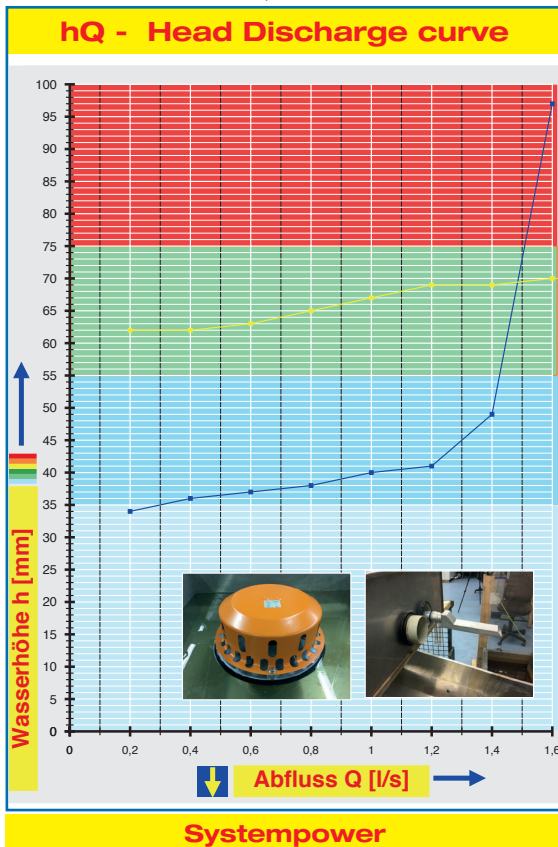
**Silent**

<b>Discharge rate:</b>	<b>1,5 l/sec</b>
<b>Water height:</b>	<b>75 mm</b>
<b>Roof penetration:</b>	<b>82 mm</b>
<b>Diameter:</b>	<b>DN 50</b>
<b>LX-Number:</b>	<b>LX 2183</b>
<b>Weir height:</b>	<b>35 mm</b>
<b>Drain:</b>	<b>ventilated</b>
<b>Downpipe:</b>	<b>ventilated</b>
<b>Downpipe height:</b>	<b>0 m</b>
<b>Drainage:</b>	<b>on floor</b>
<b>Flange form:</b>	<b>Clamping flange</b>



#### LX 2183 Piece list

- 1 x Art.-No. 01391.040X, LORO-X RAINSTAR® Parapet drain
- 1 x Art.-No. 01401.040X, LORO-X Pipe with one socket
- 1 x Art.-No. 13232.040X, LORO-X Sliding flange
- 1 x Art.-No. 15196.040X, LORO-X Rectangular emergency spout
- 1 x Art.-No. 00911.040X, LORO-X Sealing element
- 1 x Art.-No. 00986.000X, LORO-X Lubricant



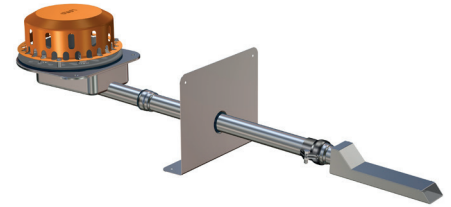
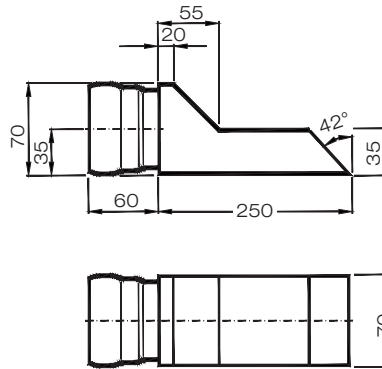
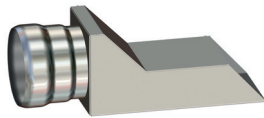
<b>Water height</b>	mm	20	25	30	35	40	45	50	55	60	65	70	75	80	85	90	95	100
<b>Discharge</b>	l/sec	-	-	-	-	1,0	1,3	1,4	1,42	1,44	1,46	1,48	1,5	1,53	1,56	1,58	1,59	1,60
<b>Silent</b>																		

## LORO-X Rectangular Emergency spout

DN 40

## LX2183-20X

**Series 88 (RB)**  
**Rectangular spout**  
 Art.-No. 15196.040X  
 Weight: 0,6 kg

**Series 88 (RB)**

Drain Art.-No. 01391.040X  
 Weight: 3,9 kg

**without upstand**

for bituminous and plastic roofing sheets

